

# RIVERHOMES

Windrush St Katharine Docks  
Wapping

£139,000  
Available

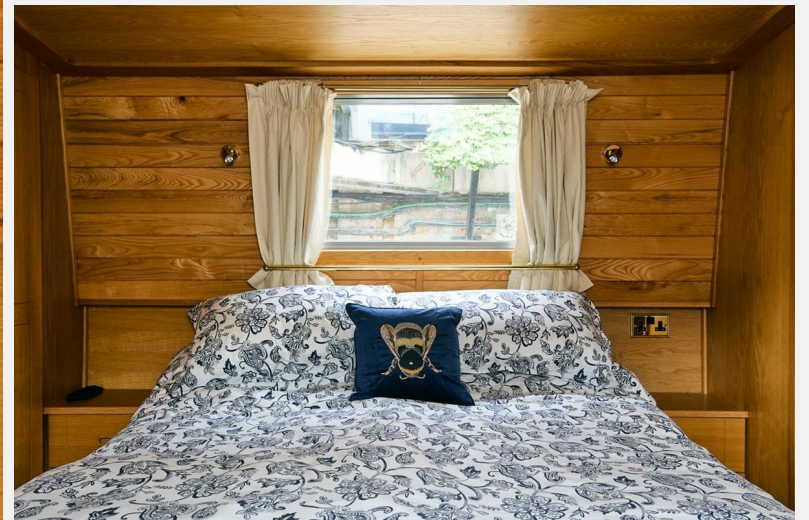


# Windrush St Katharine Docks Wapping

## KEY FEATURES

- 3 bedrooms
- 2 bathrooms
- Open-plan living area
- Efficient heating and insulation
- Moored at highly sought after St. Katharine Docks
- Excellent transport links
- Surrounded by excellent restaurants, cafes and bars
- Mooring charges £25,548 per annum approx.





# Windrush St Katharine Docks Wapping

South West & Central London Branch  
1 - 3 Lower Richmond Road  
London  
SW15 1EJ

020 8788 6000  
www.riverhomes.co.uk

## ENERGY PERFORMANCE CERTIFICATE

## KEY INFORMATION

Local Authority: London Borough of Tower  
Hamlets

Internal Area: 490.00 sq ft

Garden Area: acre(s)

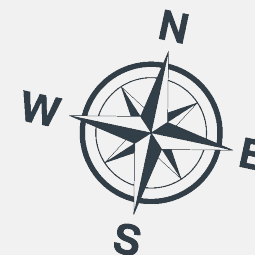
No of Bedrooms: 3

## ST KATHARINE DOCKS MARINA, E1W



Deck Plan

Approx. Gross Internal Floor Area 490 sq. ft / 45.56 sq. m  
Illustration for identification purposes only, measurements are approximate, not to scale.



World Waterside Ltd trading as riverhomes for themselves and its clients give notice that 1: They are not authorised to make or give any representations or warranties in relation to the property either here or elsewhere, either on their own behalf or on behalf of their client or otherwise. 2: These particulars do not form part of any offer or contract and must not be relied upon as statements or representations of fact. Any areas, measurements or distances are approximate. The text, photographs and plans are for guidance only and are not necessarily comprehensive. 3: It should not be assumed that the property has all necessary planning, building regulation or other consents and any services, equipment or facilities have not been tested. 4: Lease details, service charges, ground rent (where applicable) and council tax are given as a guide only and should be checked and confirmed by your Solicitor prior to exchange of contracts. 5: They assume no responsibility and any intending purchasers or tenants must satisfy themselves by inspection or otherwise as to the correctness of each of the statements contained within these particulars. If you require clarification of any points please contact us.